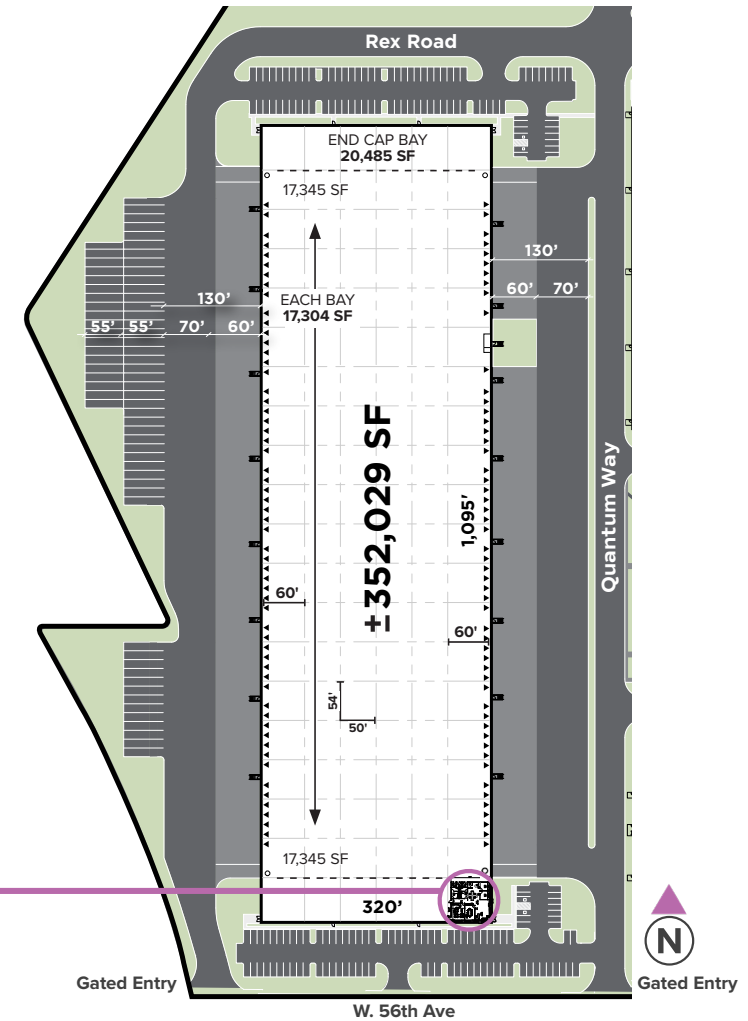
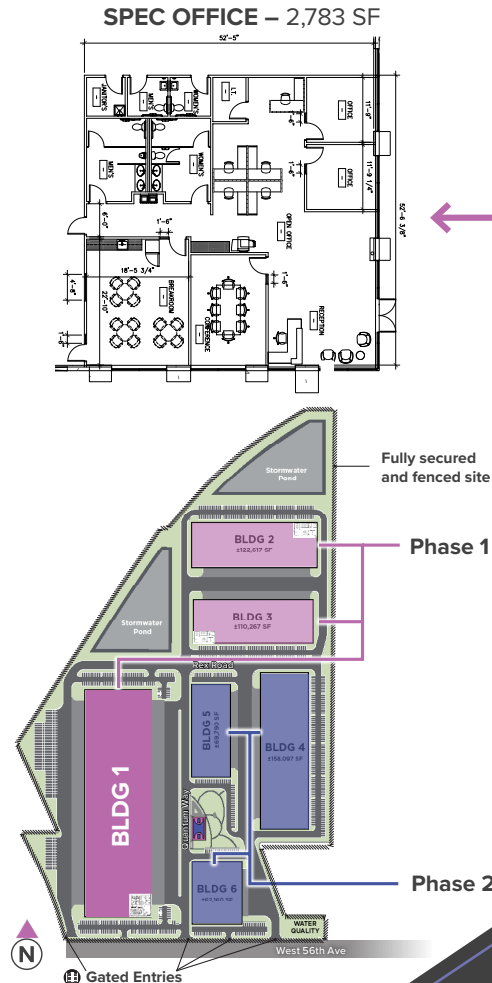
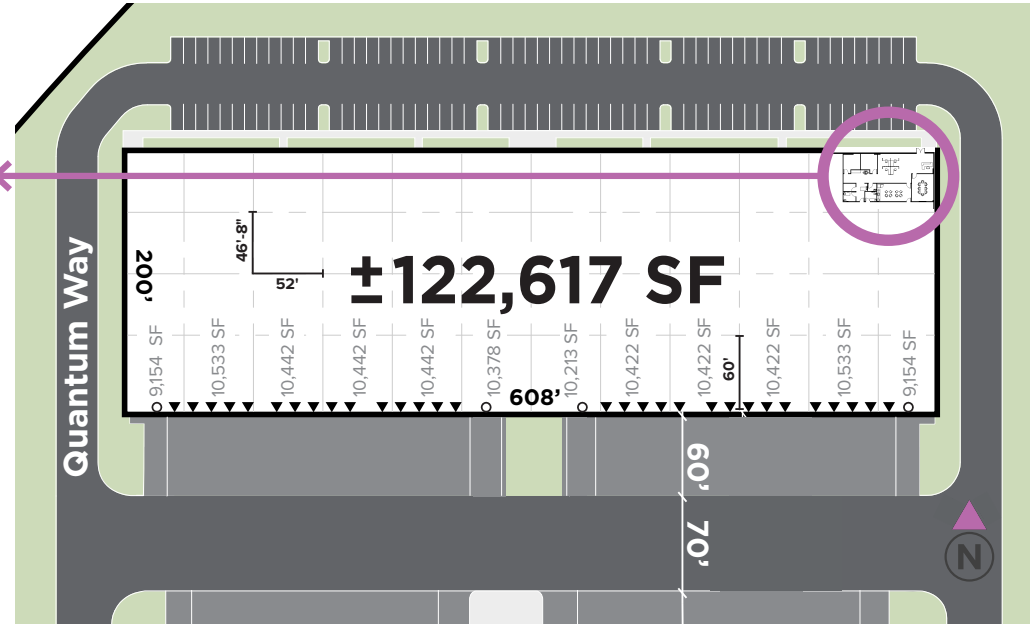
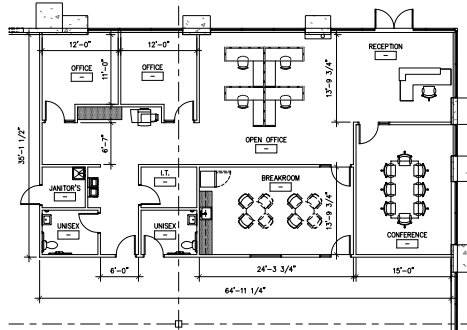


Size (SF)	±352,029
Acres	±19.31
Clear Height	36'
Auto Stalls	180
Trailer Parking	71 Stalls
Dock-High Doors	111
Drive-In Doors	4
Building Depth	320'
LED Lighting	4 lights per bay 30 footcandles measured at 3 feet
Power (AMPS)	3,000 (bldg) 800 (spec suite)
Column Spacing	50' x 54'
Spec Office (SF)	2,783



Size (SF)	±122,617
Acres	±6.16
Clear Height	32'
Auto Stalls	111
Trailer Parking	—
Dock-High Doors	30
Drive-In Doors	4
Building Depth	200'
Lighting	4 lights per bay 30 footcandles measured at 3 feet
Power (AMPS)	3,000 (bldg) 400 (spec suite)
Column Spacing	46'-8" x 52'
Spec Office (SF)	2,295

SPEC OFFICE – 2,295 SF

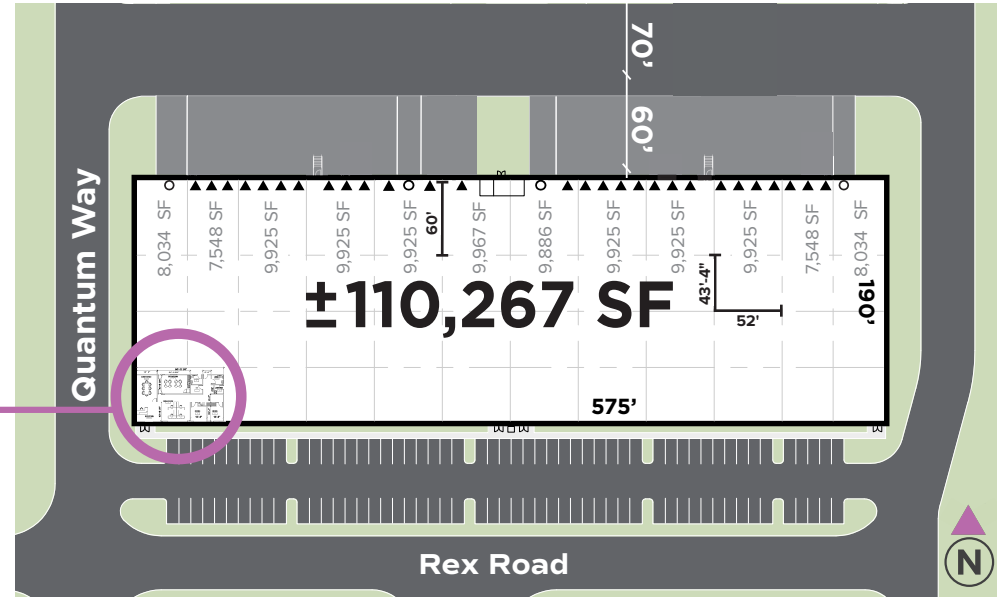
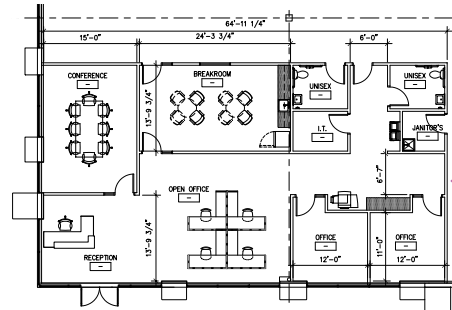


DANIEL CLOSE, SIOR
Senior Vice President
+1 303 946 3285
daniel.close@cbre.com

TODD WITTY, SIOR
Senior Vice President
+1 303 725 7189
todd.witty@cbre.com

Size (SF)	±110,267
Acres	±5.75
Clear Height	32'
Auto Stalls	103
Trailer Parking	—
Dock-High Doors	28
Drive-In Doors	4
Building Depth	190'
LED Lighting	4 lights per bay 30 footcandles measured at 3 feet
Power (AMPS)	3,000 (bldg) 400 (spec suite)
Column Spacing	43'-4" x 52'
Spec Office (SF)	2,311

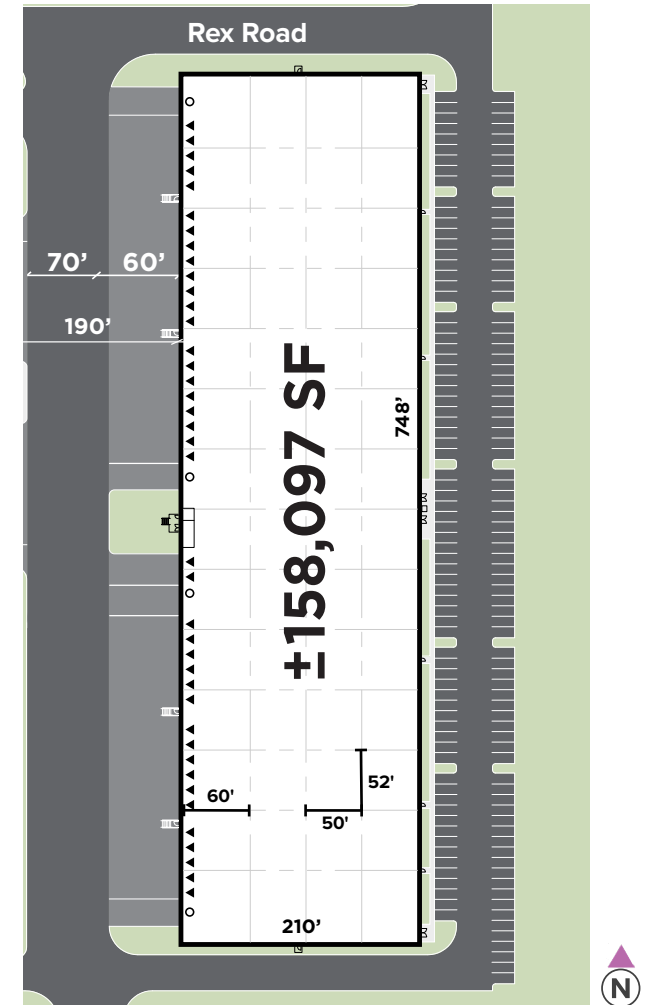
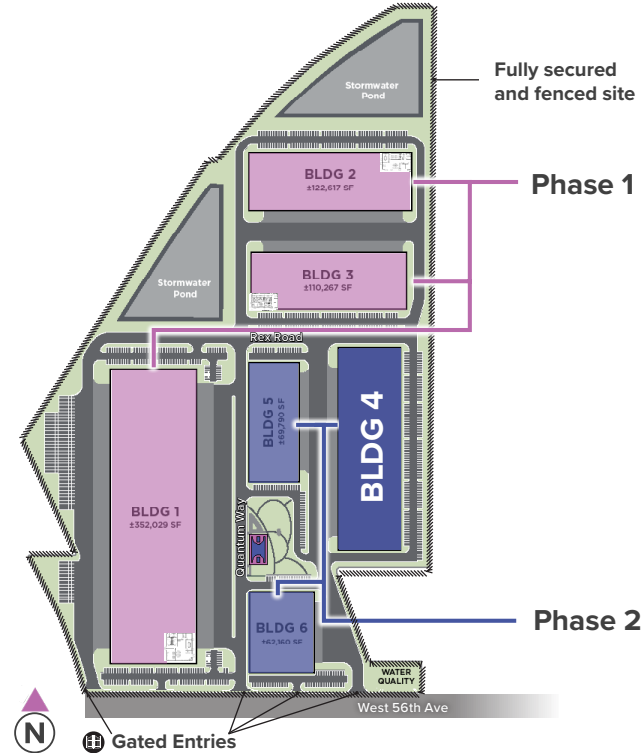
SPEC OFFICE – 2,311 SF



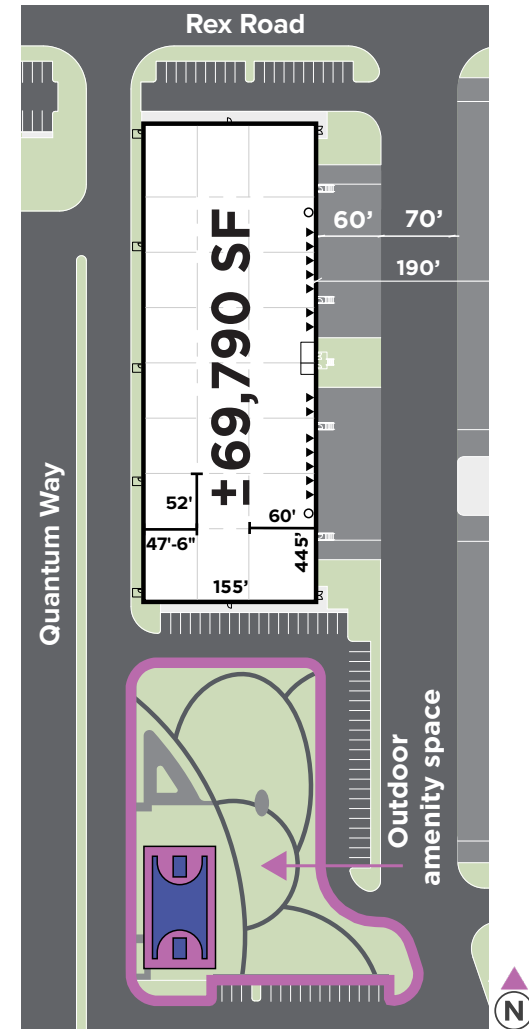
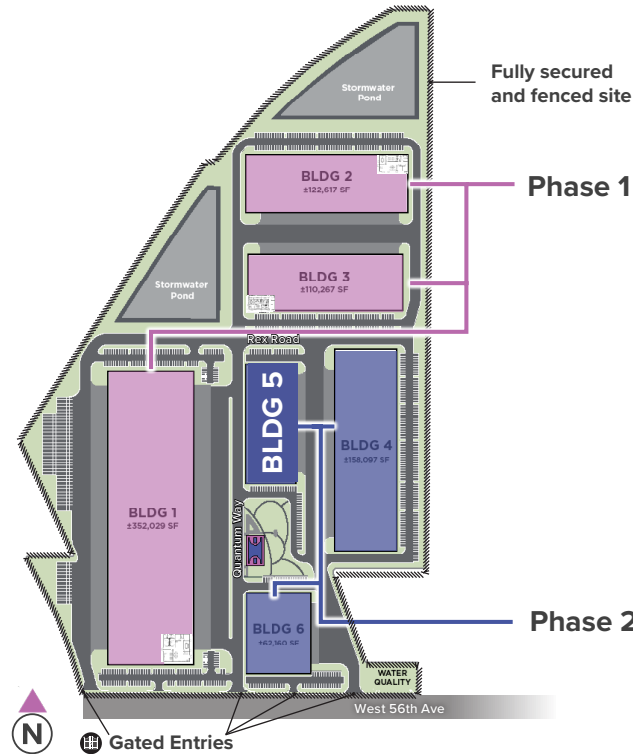
DANIEL CLOSE, SIOR
Senior Vice President
+1 303 946 3285
daniel.close@cbre.com

TODD WITTY, SIOR
Senior Vice President
+1 303 725 7189
todd.witty@cbre.com

Size (SF)	±158,097
Acres	±7.82
Clear Height	32'
Auto Stalls	149
Trailer Parking	—
Dock-High Doors	40
Drive-In Doors	4
Building Depth	210'
Power (AMPS)	3,000
Column Spacing	50' x 52'
Spec Office	TO SUIT



Size (SF)	±69,790
Acres	±3.61
Clear Height	32'
Auto Stalls	61
Trailer Parking	—
Dock-High Doors	14
Drive-In Doors	2
Building Depth	155'
Power (AMPS)	3,000
Column Spacing	47'-6" x 52'
Spec Office (SF)	TO SUIT



Size (SF)	±62,160
Acres	±3.91
Clear Height	32'
Auto Stalls	59
Trailer Parking	—
Dock-High Doors	11
Drive-In Doors	2
Building Depth	205'
Power (AMPS)	4,000
Column Spacing	48'-4" x 52'
Spec Office (SF)	TO SUIT

